



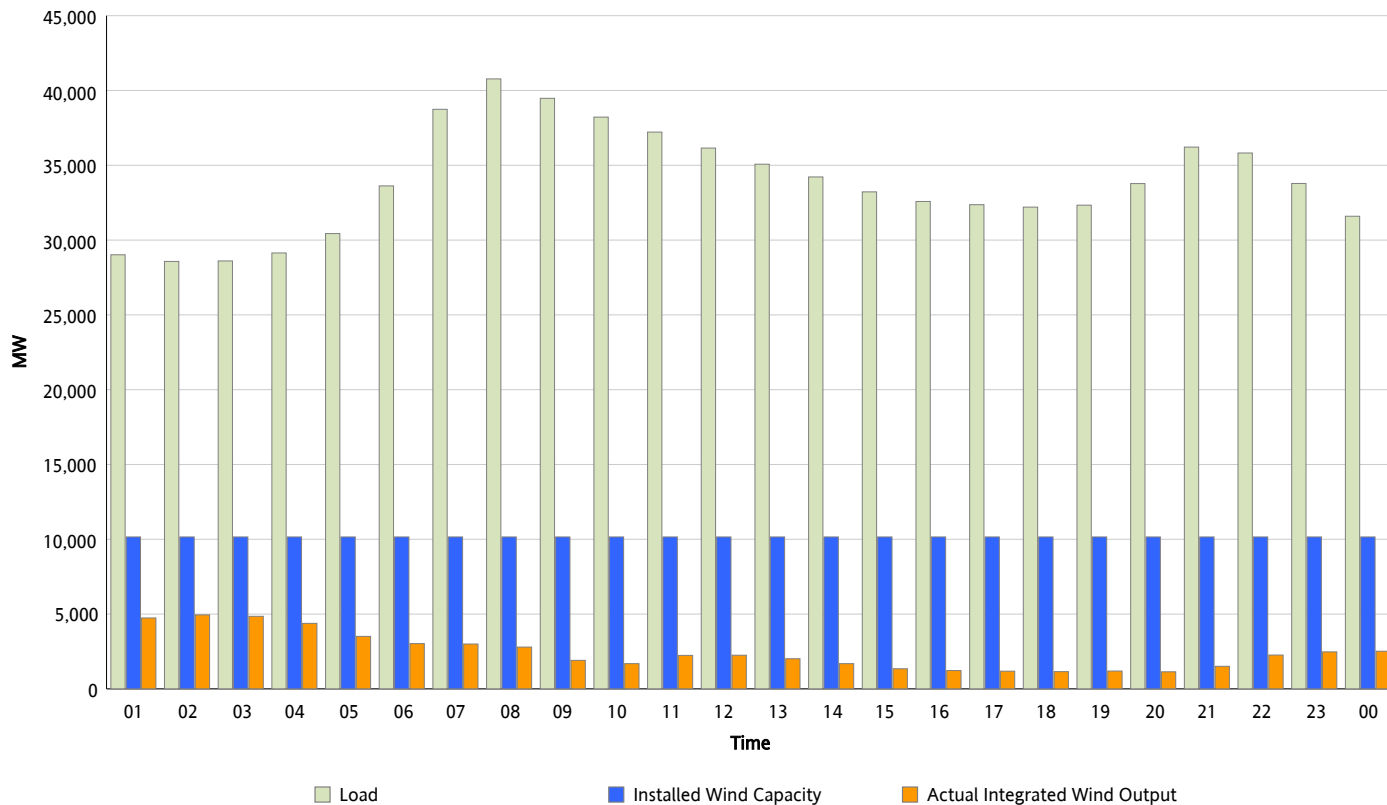
ERCOT Grid Operations

Wind Integration Report : 03/25/2013

Peak Load	40,774 MW
Load Peak Hour (HE)	08
Wind Over Peak	2,794 MW
Wind Record 02/09/13	9,481 MW
Max Wind Value*	5,032 MW
Wind Peak Time	01:48
Wind Integration %	17.59 %

Hourly Average Actual Load vs. Actual Wind Output

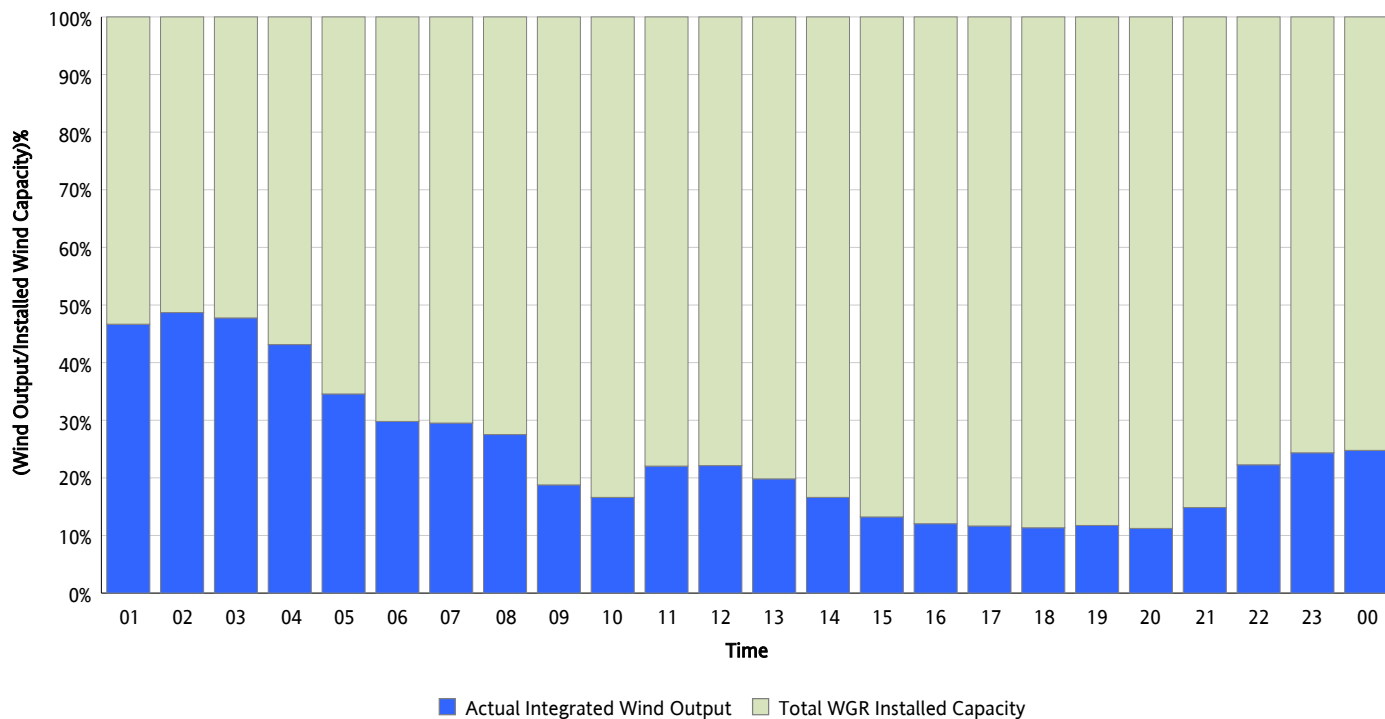
03/25/2013



* Wind Record and Wind Max represent instantaneous values and the rest of the values are integrated over the hour

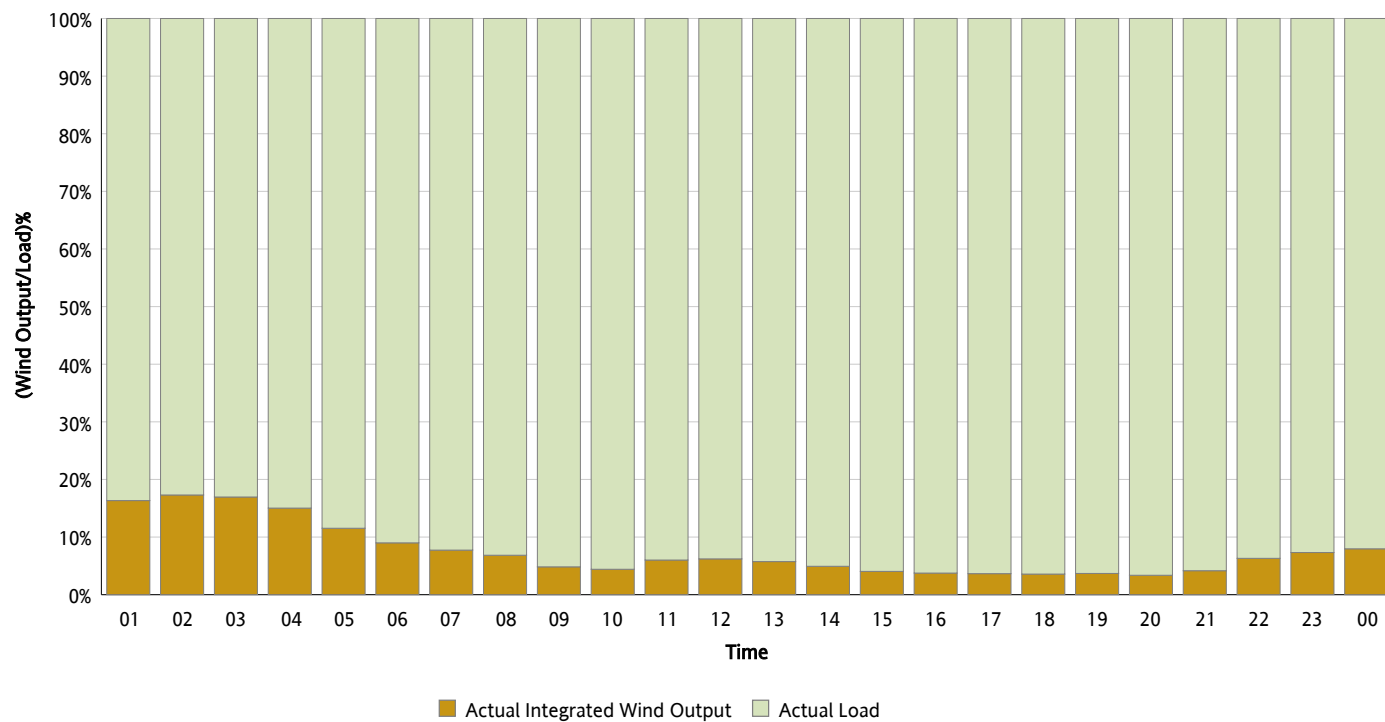
Actual Wind Output as a Percentage of the Total Installed Wind Capacity

03/25/2013



Actual Wind Output as a Percentage of the ERCOT Load

03/25/2013



ERCOT Load vs. Actual Wind Output

03/18/2013 - 03/25/2013

